

# HESSTAR

*BLENDER*



**HBL-780G3**

**INSTRUCTION MANUAL**

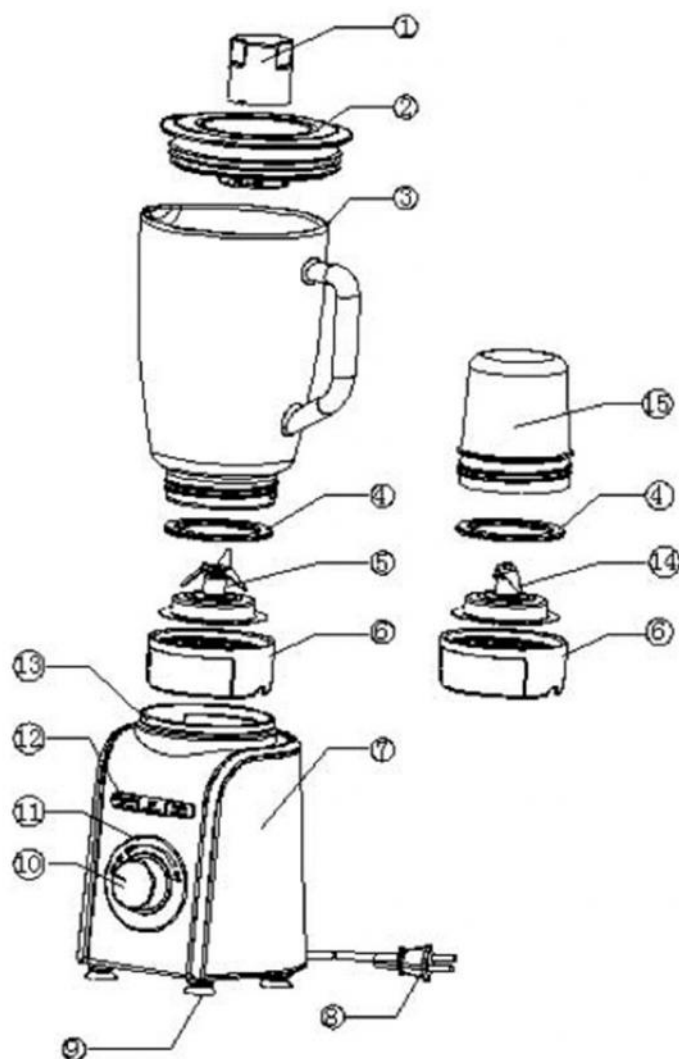
Thank you for choosing **Hesstar** Blender. In order to let the product better working for you, please read the instruction before using it. Please put away well the instruction after reading for consulting in later days.

## **ATTENTION:**

- Wrong operation and improper handling can cause problems with the appliance and injury to the user.
- The unit may be used only for the intended purposes. No liability is accepted for damages arising from improper use or faulty handling.
- Before connecting to the mains, please check whether the type of supply and the mains voltage match with the details given on the nameplate on the appliance.
- Do not immerse the appliance and mains plug in water or other fluids. Should the appliance still fall in water some time, pull out the power plug immediately and have the appliance checked by an expert before using it again. There is danger to life from electrical shock!
- Do not try to open the housing yourself! Do not introduce any kind of objects into the housing.
- Do not use the appliance with wet hands, on moist floor or when the ambience is humid.
- Do not hold the mains plug with wet or moist hands.
- Check the mains plug and mains adapter regularly for damages. In case of damages, have the power cord and mains plug changed by the manufacturer, or a qualified expert, in order to avoid danger.
- Do not operate the appliance, if power cable or the mains plug shows damage or the unit falls to the floor or has been damaged otherwise. In such cases, bring the unit to the workshop for checking and repairs, if necessary.
- Do not ever try to repair the unit yourselves. There is danger from electrical shock!
- Do not let the power cord hang over sharp edges and keep it away from hot objects and open flames. Pull the plug itself to remove it from the plug socket.
- Installation of a spike protector will offer additional protection with a nominal trigger current of not more than 30 Ma in the house installation. Please consult your installing electrician.
- The cable as well any extension cable required should be laid such that there will not be any risk of anyone pulling it inadvertently or tripping over it.
- If a long extension cable is used, it must be suitable for the power supply in question. Otherwise it causes overheating of the cable and/ or plug.
- Set the unit on a rigid, flat and heat-proof surface, not near open flames(such as gas oven) and operate it out of reach of children.
- This appliance is suitable neither for commercial use nor for use outdoors.
- Children cannot sense the dangers caused by improper handling of electrical devices.
- This appliance is not intended for use by persons (including children) with reduce physical, sensory or mental capabilities, or lack of experience and knowledge, unless they have been given supervision or instruction concerning use of the appliance by a person responsible for their safety.
- Do not, therefore, let children use household devices, except under supervision.
- Pull out the plug out of the socket, when the appliance is not in use and also before cleaning.
- Caution! The appliance is on power so long as it is connected to the power circuit.
- Switch off the unit before pulling out the mains plug.
- Use only spare parts from the manufacturer or his local dealer.
- Never carry the unit by its power cord.
- Do not remove individual housing components.

**Caution:**

Switch off the unit before clean it to avoid creepage and other dangers. When the plug or power cord damaged, do not use the unit, even not to disassembly by yourself, must be inform the after-service center to handle.

**PARTS ITEM**

1. Measure cup
2. Jug cover
3. Glass jar
4. Glass jar sealed ring
5. Blade components
6. Jug holder
7. Main body
8. Power cord&plug
9. Skidproof glue feet
10. knob
11. aureola
12. Function button
13. Upper base of housing
- 14 grinder components
- 15 grinder

**Installation**

1. Clean the Measuring cup, Jug cover and glass jar(except main body)and so on before first using.
2. To make sure the unit is turned off and not to connect before installation.
3. First ring the Glass cup sealed ring into blade base, then enclose the blade base into glass jar, last rock the glass jar

slightly causing it to lock into place.

4. Put the glass jar base on the top of motor main body , please pay attention to match the position of glass jar and the bulge of the motor main body.

Fill the blending receptacle with the desired foods. please ensure the water not spill over from cup.( Maximal water capacity can not exceed 1500 ml)DO NOT USE THE UNIT WITHOUT ANY MATERIAL INSIDE.

5. Put the jug cover on top of the glass jar and push it down. Insert the closure into the jug cover and turn till it locks into place.

6. Place the measuring cup on the center of jug cover, anticlockwise rock the measuring cup slightly.

## OPERATION

1. Connect the power. Please ensure the turning knob turn to “OFF” before connect the power.

2. This unit have safety design, it do not working if the glass jar is not install on motor main body properly.

3. Fill the blending receptacle with the desired foods.

4. Put the jug cover on top of the glass jar and fix it. Place the measuring cup on the center of jug cover, anticlockwise rock the measuring cup slightly.

5. Put the blending cup on main body upper base, blue light of knob turn light, which means power connected .Then can operate normally.

6. If using the grinder, remove the grinder jar, then put the coffee bean into the glass jar. The coffee bean cubage is less than 60% of the total grinder cubage. That will be better. Fit the glass jar holder tighten. And put the whole grinder into the upper holder of housing. It can start to blend coffee bean.

7. Turning knob to “ON”, the functions of “SMOOTHIE” ( milk shake)、 “ICE”、 “PULSE” are available; Press one of buttons that button light and running.

8. For choosing the speed of knob, please turn the knob between “MIN” (low speed)and “MAX” (high speed) to choose the required speed.

9. Please stop working after operating continuous for 2 minute.

## SPEEDS ADJUST

### 1. SMOOTHIE

—Stainless steel blade operate at high speed, suitable for symmetrical blending.

### 2. ICE

—Stainless steel blade operate at high speed, running for 0.5 second then stop for 1 second, suitable for blending ice.

### 3. PULSE

—Stainless steel blade operate with transitorily highest speed.

### 4. MIN

—Stainless steel blade operate at low speed.

### 5. MAX

—Stainless steel blade operate at high speed.

### 6. ON

—The machine connect with electricity and functions of “SMOOTHIE”、 “ICE” and “PULSE” are available

### 7. OFF

—Turn off the unit.

**Caution:**

1. Over-filled can block the operation, please turn off the unit and un-connect the plug, take out some of material, then operating.
2. Do not use unit continuous more than 1 minute.

## **CLEANING AND STORAGE**

1. In addition to this, you must refer to the security precautions.
2. Do not clean Motor main body, power cord and plug with water.
3. Clean the engine base with a soft, wet piece of cloth and some mild cleaning agent.
4. Fill the blending receptacle half-full with hot water and a little cleaning agent. Let the unit run on speed 2 until the blending receptacle is clean.
5. The base with the blades can be taken apart. Screw of the base counter-clockwise. Take out the blades together with sealing ring facing upwards.
6. Clean the grinder, please fill the grinder half-full with hot water and a little cleaning agent; put the upper holder of housing into the grinder. Let the unit run with speed 2 until the grinder is clean. And then use the water to clean all of grinder components.
7. Now clean blending receptacle, jug cover, closure, base and blades with sealing ring or speed blender with hot water and some cleaning agent. Make it dry before re-using.  
Caution! The blades inside of the blending receptacle and speed blender are very sharp.
8. Never use aggressive cleaning agents.
9. Put the blender on the safety place.

**Warning:**

Do not to touch the sharp blade when clean, please wipe by dish cloth, to avoid accidentally injure.

## **SPECIFICATION**

Rated voltage ; 220-240V~ 50/60Hz  
Power : 700W  
Capacity : 1.5L  
Operating time : 1 minute

**NOTE:**

1. Unit suitable for household.
2. Do not use for commerce use.